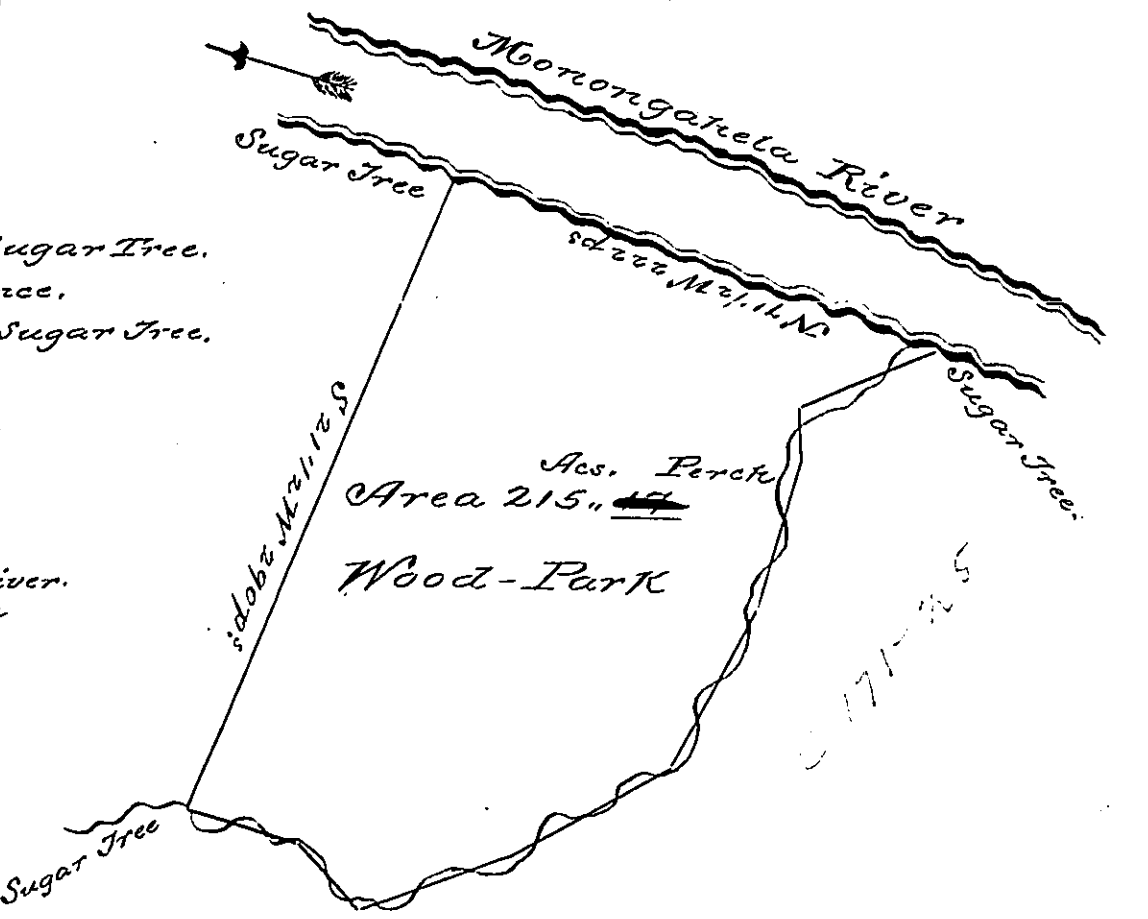


Beginning at a Sugar Tree,
 on the River thence,
 S^o 21 1/2 W. 290 P^s to Sugar Tree.
 S^o 75 E. 46 D^o
 S^o 45 E. 38 D^o
 S^o 68 E. 70 D^o
 N^o 53 E. 40 D^o
 S^o 67 E. 35 D^o
 N^o 36 1/2 E. 78 D^o
 N^o 15 E. 60 D^o
 North 25 D^o
 N^o 51 E. 68 D^o to River.
 N^o 71 1/2 W. 222 D^o down
 the River to Beginning.

Course Down
 a Dry Run



A16-63

The above is a Draught of a Survey made May 23rd 1785
 for Wm Scott Ass^{ts} of Joseph Parkison Ass^{ts} of Brady &
 Brooks in pursuance of a Certificate granted to Jos. Parki-
 son on the following words viz

"We the Commissioners for adjusting the claims to unpatented lands
 in the Counties of Monongalia, Yokogania and Ohio do
 hereby certify that Jos. Parkison Ass^{ts} of Brady and Brooks
 is entitled to three hundred & eighteen Acres of Land in
 the County of Yokogania situate on the Monongahela Ri-
 ver to include his Settlement made in the year 1770.

Given under our Hands at Cox's Fort this 11th Feby.
 1780 & in the 4th year of the Commonwealth signed

Francis Peyton
 Sam^l Irwin Clk. Geo Tenn. Phil. Pendleton
 Jos. Holmes

Situate in Nottingham Township
 Washington County. Containing 215^{acres} 17⁹

Jn^o Lukens Esq^r }
 Presy Nevill } D^{rs}
 Matt^o Ritchie }

IN TESTIMONY that the above is a copy of the original remaining on file in
 the Department of Internal Affairs of Pennsylvania, made
 conformably to an Act of Assembly approved the 16th day of
 February, 1833, I have hereunto set my Hand and caused
 the Seal of said Department to be affixed at Harrisburg,
 this third day of May 1898

James W. Pitts
 Secretary of Internal Affairs.